



KY-PZ100 (Black recommended)

Modular Outdoor-System-Housing for JVCKENWOOD KY-PZ100 Camera-Series.

Protection Class IP 64
 Temperature range :
 -20°C to +40°C

KST-OH100 outdoor System V2.0

for

KY-PZ100

Modular outdoor housing for JVCKENWOOD KY-PZ100 Camera Systems, including heating- and ventilation-system, Protection Class IP64.

- ▶ Protection Class IP64 standard
- ▶ Keeps camera-, lens- and P/T system clean and dry
- ▶ Temperature range between -20°C and +40°C assured by active heating and ventilation
- ▶ Maximum protection against environmental influences such as dust, smog, salt, moisture and insects
- ▶ Air- in- and out-take protected by dust- and insect-filter
- ▶ Available with transparent

- ▶ Available in different output- and power-configurations
- ▶ Power-connection : 230 VAC, alt. 12 VDC or POE
- ▶ Signal-connection : SDI/HDSDI out (or HDMI), optional CVBS out, LAN
- ▶ Remote-connection : LAN, optional RS422m,USB (WLAN / 4G LTE with optional 3rd party dongle)
- ▶ Length of the cable-set : 2,5 m from mountingbase (optional special lengths, connectors in bracket or junction boxes for outdoor installation)

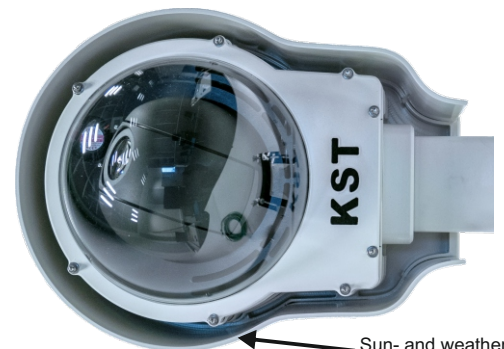
OPTIONAL :

- ▶ Wall bracket fitted with ceiling, pole mount or special mounts if requested (Page 3)
- ▶ Integrated Fibre Transmission (F) or POE Injector/Splitter (POE)



Air intake with protective filter

Modular construction for extension by optional modules



Modular construction for extension by optional modules (for example, fiber optic Transm. or POE-Splitter)

Sun- and weather protection-shield



High-Res-Dome

Types with wall-mount :

- KST-OH100WM-SH** Outdoor-Housing for KY-PZ100 PTZ-Cameras incl. DBH-06 wall-mount
- Camera-Housing protection class IP64 standard
 - Active heating and ventilation
 - Air- In and Out-let protected by dust- and insect-filter
 - 12V DC power supply
 - 2,5m cable-set (SDI, HDMI, Lan, 240VAC)



Housing with DBH-06 wall-mount

- KST-OH100WM-POE** Outdoor-Housing for KY-PZ100 PTZ-Cameras incl. DBH-06 wall-mount
- Camera-Housing protection class IP64 standard
 - Active heating and ventilation
 - Air- In and Out-let protected by dust- and insect-filter
 - POE injector/splitter 90W
 - 2,5m cable-set (SDI, HDMI, POE-Lan, 240VAC f.Injector)

- KST-OH100WM-F** Outdoor-Housing for KY-PZ100 PTZ-Cameras incl. DBH-06 wall-mount
- Camera-Housing protection class IP64 standard
 - Active heating and ventilation
 - Air- In and Out-let protected by dust- and insect-filter
 - 12V DC power supply
 - HDMI Fibre-Extender-Transmitter and Receiver
 - 2,5m cable-set (SC multimode Fibre, Lan, 240VAC)

Types with ceiling-mount :

- KST-OH100CM-SH** Outdoor-Housing for KY-PZ100 PTZ-Cameras incl. DBH-07 ceiling-mount
- Camera-Housing protection class IP64 standard
 - Active heating and ventilation
 - Air- In and Out-let protected by dust- and insect-filter
 - 12V DC power supply
 - 2,5m cable-set (SDI, HDMI, Lan, 240VAC)

Housing with DBH-07 ceiling-mount



- KST-OH100CM-POE** Outdoor-Housing for KY-PZ100 PTZ-Cameras incl. DBH-07 ceiling-mount
- Camera-Housing protection class IP64 standard
 - Active heating and ventilation
 - Air- In and Out-let protected by dust- and insect-filter
 - POE injector/splitter 90W
 - 2,5m cable-set (SDI, HDMI, POE-Lan, 240VAC f.Injector)

- KST-OH100CM-F** Outdoor-Housing for KY-PZ100 PTZ-Cameras incl. DBH-07 ceiling-mount
- Camera-Housing protection class IP64 standard
 - Active heating and ventilation
 - Air- In and Out-let protected by dust- and insect-filter
 - 12V DC power supply
 - HDMI Fibre-Extender-Transmitter and Receiver
 - 2,5m cable-set (SC multimode Fibre, Lan, 240VAC)

Mounting Options

Standard- Wallmount KST-DBH06

The wall mount DBH06, made of aluminum, serves as a base for special mounting adapters shown below. The connecting cables of the camera system are hidden and protected by the arm.

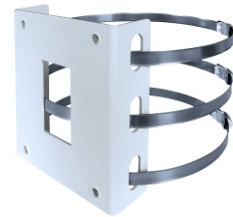
Load capacity up to 25kg (included in KST-OH100WM versions)



Pole-Mount-Adapter KST-DBHWGC

The pole mount adapter DBHWGC is combined with the wall bracket DBH06. It allows the installation of the system on poles with diameters of 210mm-225mm.

Load capacity up to 25kg

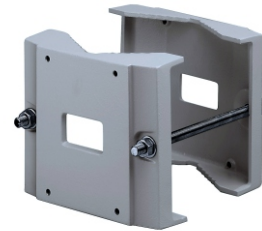


Pole-Mount-Adapter KST-PTCC1

(It is possible to mount 2 DBH06 opposite)

The pole mount adapter PTC1 is combined with the wall bracket DBH06. It allows the installation of the system on poles with diameters of 80mm-150mm.

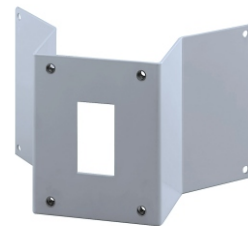
Load capacity up to 50kg



Edge-Mount-Adapter KST-WCWGC

The corner mounting adapter WCWGC is combined with the wall bracket DBH06. It allows the installation of the system on building corners.

Load capacity up to 50kg



Ceiling-Mount KST-DBH07

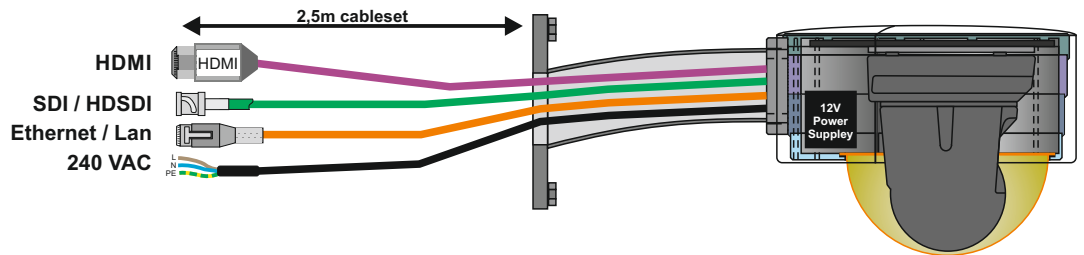
The ceiling mount DBH07, made of aluminum, can be mounted under eaves, canopies or similar horizontal mounting locations. It is an alternative to the standard wall mount DBH06. The connecting cables of the camera system are hidden and protected by the arm.

Load capacity up to 25kg (included in KST-OH100CM versions)

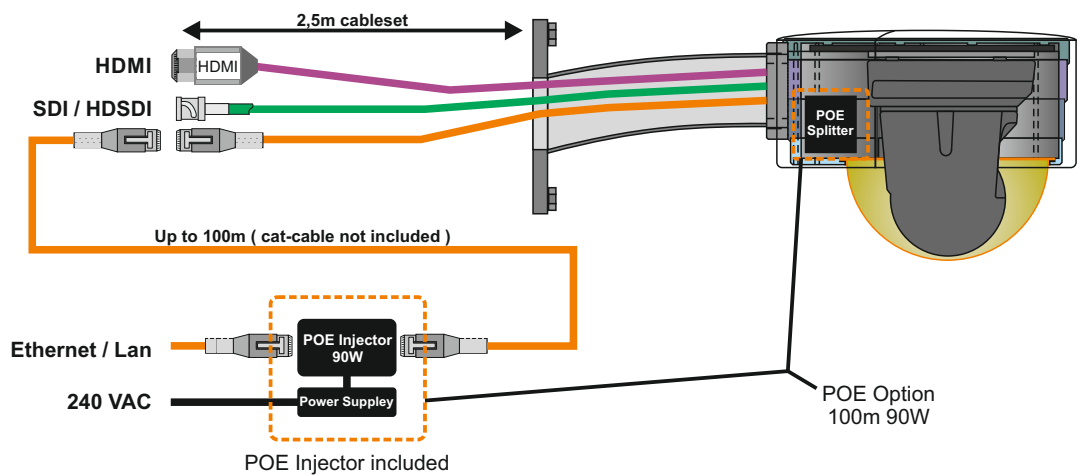


Connection Versions

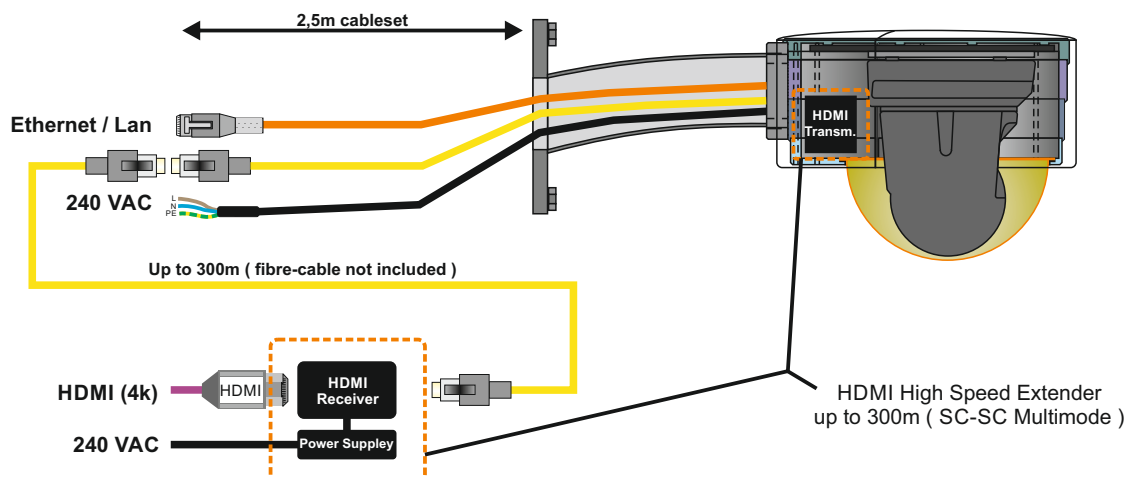
KST-OH100(W/C)M-SH Version with SDI, HDMI, Ethernet and 240VAC connection



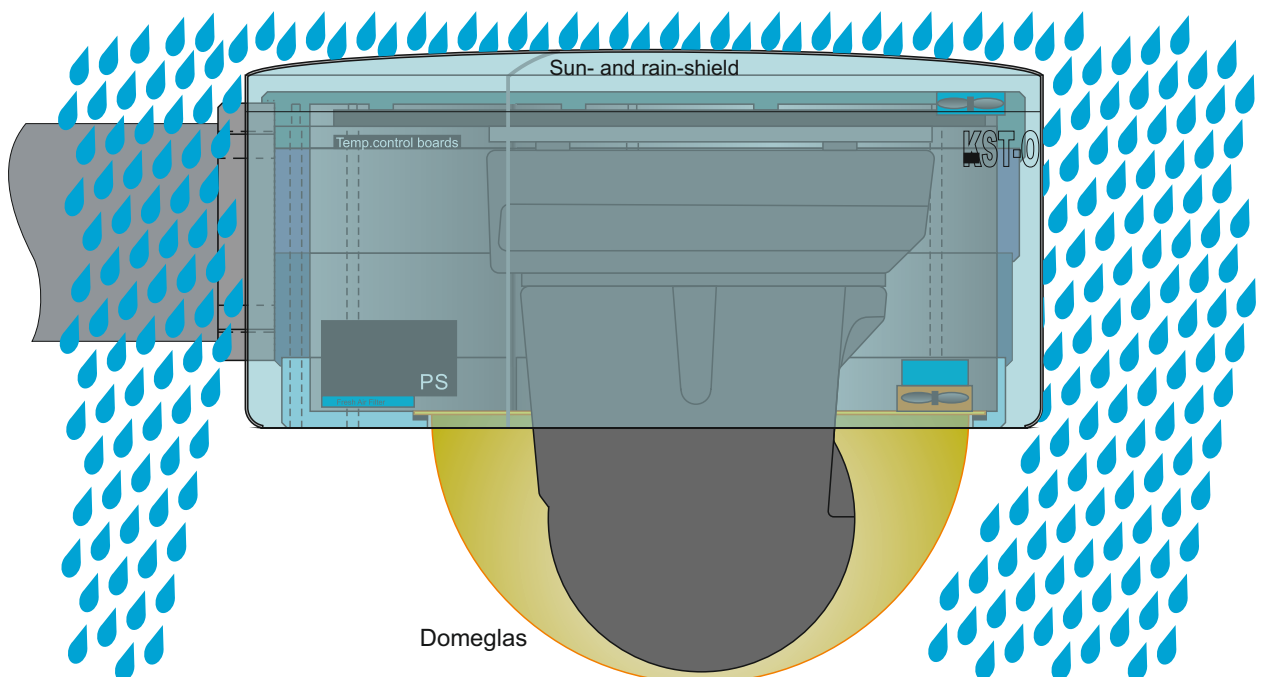
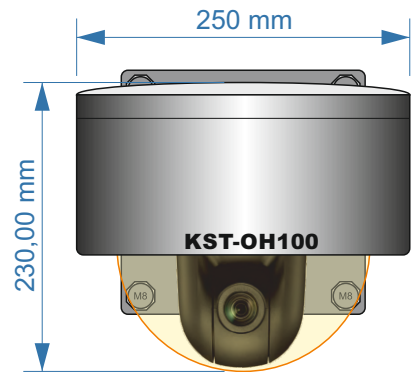
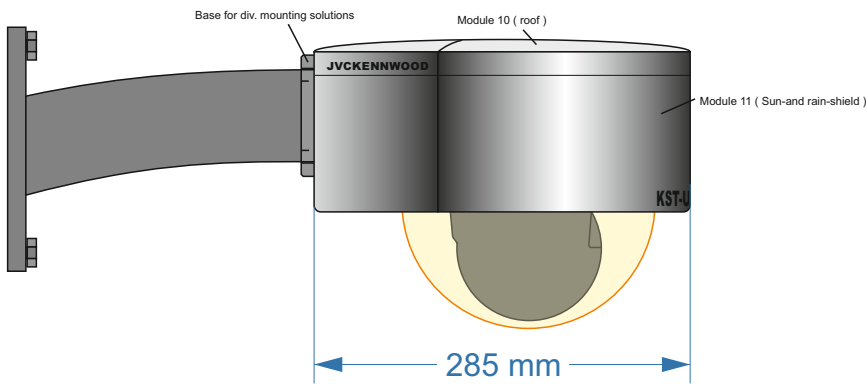
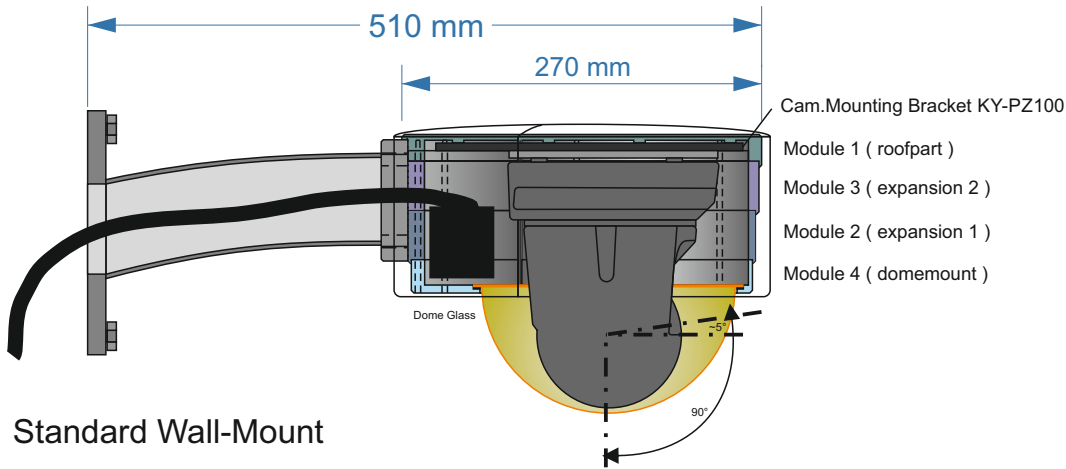
KST-OH100(W/C)M-POE Version with POE (Line) Ethernet, SDI and HDMI connection



KST-OH100(W/C)M-F Version with HDMI-Fibre-Ext., Ethernet connection

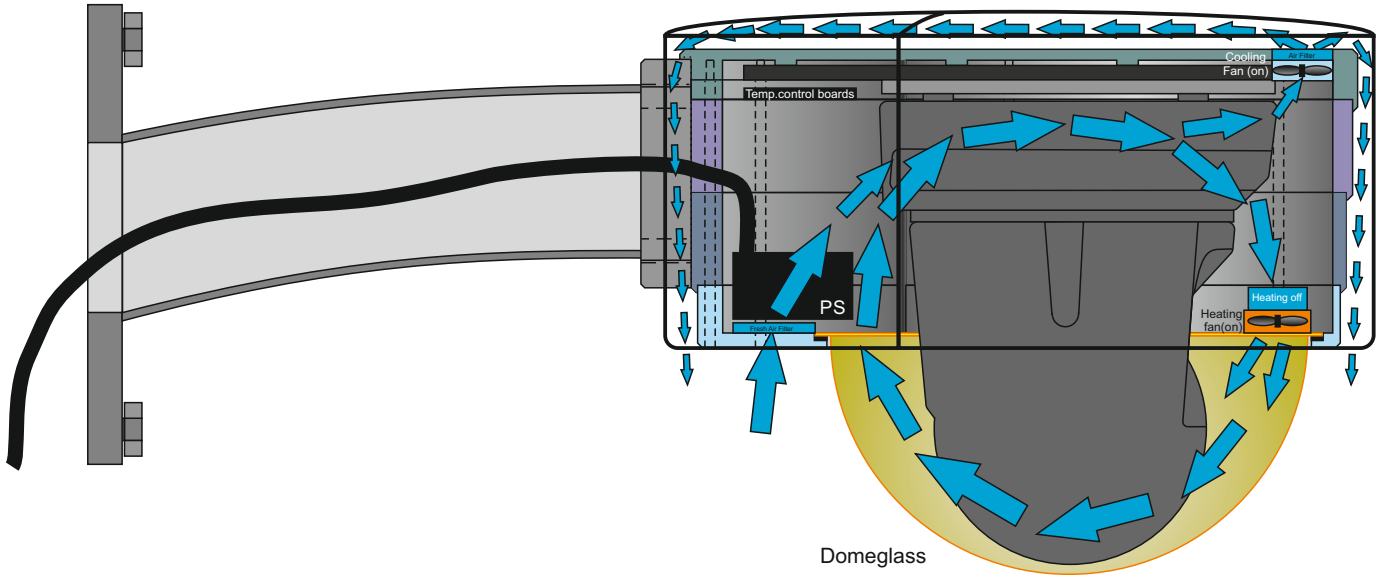


Technical views

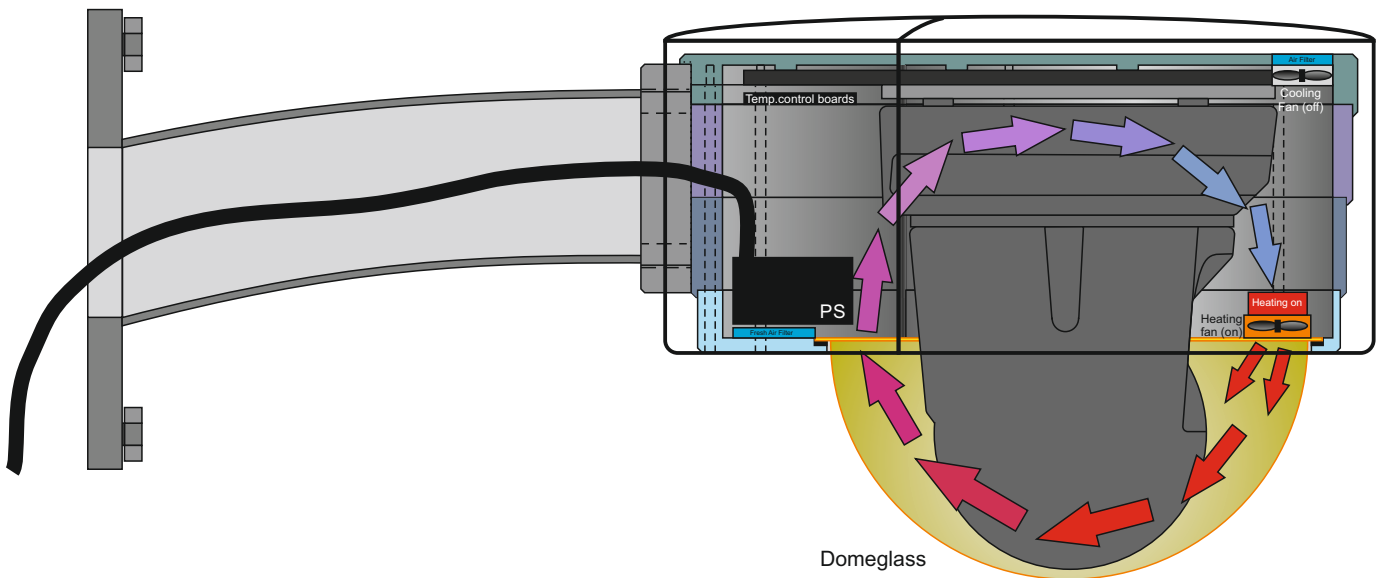


Ventilation situations

Cooling situation (starting ~21°C internal system temperature)



Heating situation (starting ~7°C internal system temperature)



2017	Name	Gez.	Blatt:	1 von 6	Ausf. Nr.:	Änderung / Ergänzung	Datum:	Gez.	Auftraggeber:
Gez.	Axel Moschkau	AMO	Maßst.:		1	Ersterstellung	25.05.17	AMO	JVCKENWOOD
Gepr.			Größe:	DIN A4	2				Zeichnungs Nr.:
Genehm.					3				Projekt Nr.:
Bezeichnung :					4				KOMMUNIKATIONS- UND SICHERUNGS-TECHNIK KST Am Burgholz 36 Tel: 02421/55890 52372 Kreuzau Fax: 02421/56086 Gewerbegebiet Stockheim Moschkau GmbH www.kst-moschkau.eu info@kst-moschkau.eu
Designsheet KST-OH100					5				
					6				
					7				
					8				
					9				
					10				