



AtomOne

ACCESSORIES

Foreword by CEO
Peter Schaper

Pg. 4



Built for action. Small,
strong, versatile.

Pg. 12



Our Certified
Accessories.

Pg. 28

www.atom-one.de

PROFESSIONAL BROADCAST CAMERAS



Contents

| | |
|-------------------------------------|----|
| Foreword by CEO Peter Schaper | 04 |
| Tell your Story | 08 |
| Built for Action | 12 |
| DCT Motor drive | 18 |
| Power & Connectors | 20 |
| AtomOne mini Underwater housing | 22 |
| AtomOne Opensource | 24 |
| AtomOne Provideo GUI | 26 |
| Certified Accessories | 28 |
| Anadicon – PL & B4 Mount to C-Mount | 30 |
| Lenses | 32 |
| CyanView – RCP | 34 |
| Skaarhoj – RCP | 36 |
| WiCo – Atom Box | 38 |
| Broadcast Electronics Ltd. | 40 |
| Remote Head + Camera Panel MK3 | 42 |
| LanSee | 44 |
| Bluebell | 46 |
| Vietex Media | 48 |
| Trusted Partners | 50 |
| AtomOne Family Overview | 53 |

Introduction

Hannover96—power, precision, passion:
camera and club aligned.

We are proud to partner with Hannover96; the flagship club of the Dream Chip endeavor. Their drive, energy and skill don't just embody everything that our cameras can capture, they embody all of the values that we at Dream Chip hold dear; tenacity, discipline and a desire to excel. And in our love and support of them, we remember our local Hannover roots even as we work to achieve a worldwide camera revolution: local passion, global reach.

Moreover, with their club motto 'Never Alone', they describe perfectly what our cameras achieve; they allow fans across the globe to be immersed in the moment – right there beside the players, the fans, the coaches – involved in every unique moment. Never Alone.



*Peter Schaper - Managing Director
Dream Chip Technologies*





© Lars Kaletta



Hannover96: Their drive, energy and skill don't just embody everything that our cameras can capture, they embody all of the values that we at Dream Chip hold dear; tenacity, discipline and a desire to excel.

Tell your Story

Everybody has a story. How to tell it best?
Our products are developed with one reason
in mind, to allow you to tell your story.

But what's our story? AtomOne cameras are developed by Dream Chip, based in Germany. Whilst innovation and technological progression sit at the heart of what we do, what we're truly about is emotion: about allowing you to catch the detail and magic of a movement, or to immerse your viewer in a moment.

We're also proud to be working towards a more sustainable environment; maximising environmentally-friendly practices in our offices and minimising energy need and plastic in our products (which of course also carries the benefit of making them far more robust).





[Read the article:](#) Dream Chip's ATOM Cameras Take Viewers on David Blaine's Death-Defying Balloon Stunt with Him.



We used them under the most challenging of conditions and they performed exceptionally well in the heat of the Arizona desert all the way up to the freezing temperatures at high altitude. Combined with 3g's remote telemetry and video transmission systems, we maintained full control of them throughout the flight and watched the live images of David's flight in awe – along with the rest of the World!

– Nathan Spencer, EIC – 3g Wireless

Built for action

Small, strong, versatile – with limitless application.

Our aim was to make a product where the only real limit was the imagination of the user. Full creative possibilities – facilitated by a camera that can be placed almost anywhere, giving a completely unique perspective on the subject matter. An unusual angle, a striking shot – these revolutionise the viewer experience.

And because our German build-quality makes our products robust and hardy, you can be sure they'll survive even the most challenging of environments.



Made in Germany





The camera looks spectacular. If you don't look very closely, you might not even notice it was a POV camera, and yet it's small enough to close your hand around. It's definitely the most impressive POV camera I've seen in years.

— MLB All Star



AtomOne Accessories: Whether it be tiny size, IP control, 4K capability, B4 and C mount options, super-slow-motion, Genlock, zoom integration, or waterproof housing, the AtomOne family already provides immense flexibility built-in from the start; allowing you to find a camera that meets your creative vision and fits in with your existing workflow. But for those who want even greater flexibility in the way they choose to deploy their AtomOne cameras, there are a range of accessories available; both through Dream Chip and Third Party Vendors.

DCT – Motor Drive

For those who want to explore even more creative options than those offered by our already excellent auto-exposure settings, an Iris motor offers fine exposure control, either over RCP or through our free software.

Compatible with the lenses:

- Computar M0824-MPW2
- Computar M1620-MPW2
- Computar M2518-MPW2
- Computar V0828-MPY
- Computar V1228-MPY
- Computar V1628-MPY
- Kowa LM5JCM
- Kowa LM5JC10M
- Kowa LM8JC1MS
- Kowa LM8JC5MC
- Kowa LM4HC
- Kowa LM6HC
- Kowa LM8HC



Power & Connectors

It's difficult to get excited about cables – but unfortunately, the right person for the job is inevitably the person with the right cable. In line with our mantra of full flexibility and full connectivity, we provide a number of cabling options to give you full operational control.

- 1| **AtomOne Power Cable:** The power connector is a Hirose male HR10 6 pin connector on the one side and on the other side a Power ITT Male M-XL-3-12L and a RS485 ITT Female M-XL-3-11L. Cable length: 2m
- 2| **AtomOne Power Suplly:** Power cable to ITT Female M-XL-3-11L. Cable length: 1,8m
- 3| **RS485 to USB:** By using a RS485 to USB converter the Windows ProVideo software can be used to configure the camera with an easy to use GUI. All commands are text based. Details can be found in the “ATOM one – Reference Manual”. Cable length: 25cm
- 4| **Mini HD-SDI to SDI Cable:** Mini HDSDI to HDSDI. Cable length: 3m
- 5| **SSM500 Power Cable:** For power and control,a Hirose male HR10A-10R-10PB on the one side and on the other side a PowerXLR 4-pin male6-wire AWG 26 Power cable and a RS485ITT FemaleM-XL-3-11L6-wire AWG 26 RS422 cable.
- 6| **SSM500/Barracuda Power Supply:** Power cable to XLR 4-pin.



1 | AtomOne Power Cable / 350-00011



2 | AtomOne Power Suplly 12V 2A / 350-00007



3 | RS485 to USB / 350-00010



4 | Mini HD-SDI to SDI Cable / 351-00006



5 | SSM500 Power Cable



6 | SSM500/Barracuda Power Supply

AtomOne 4K mini Underwater housing

Imagine the intensity that 4K quality underwater shots could bring to your productions, be it swimmers or monsters in the deep. With underwater housing for the AtomOne 4K mini – you don't need to imagine anymore.

Material: Anodized Aluminum

Size: 48mmx48mmx185mm

Weight: 400g (without camera)

Mounting points: 4 x 1/4"-20 UNC, 8 x M3

Lenses: M12, C-Mount lenses (max diameter: 35, max length: 20mm)

Name: IP67



GitLab

Issues 400

Merge Requests 255

CI / CD

Pipelines

Jobs

Schedules

41c8963d

Dependency scanning detected 7 vulnerabilities

Pipeline

Jobs 10

Security report 7

Prepare

crop_pictures

Build

build_runner

AtomOne Open Source

Compact, lightweight & precise.
The coin-size action cam.

At Dream Chip, we love engineering. Not only for what it can do, but for the sheer joy inherent in it. Our greatest pleasure is to collaborate with other engineers, which is why we believe so strongly in Gitlab.

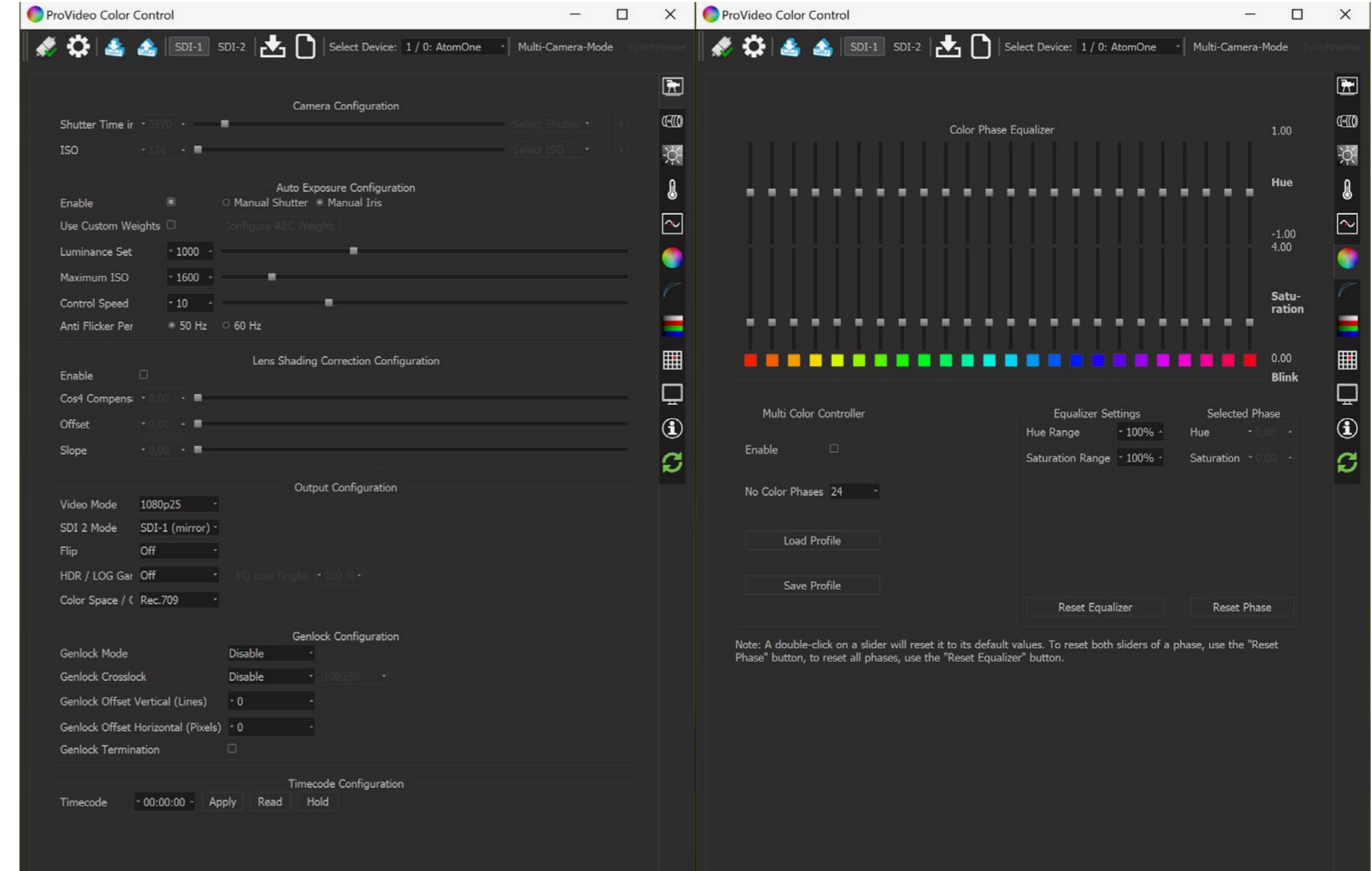
AtomOne ProVideo GUI

The choice to make things simple or complex is entirely yours.

First and foremost, Gitlab allows us to provide progressive and continuous updates to our products – constantly expanding their range of applications and the quality of their outputs. All for free.

But secondly, it allows us to be transparent in what we do, and to put our tools in the hands of others – giving them the building blocks so that they can use their expertise and creativity to push the potential of AtomOne cameras even further, to build software that shapes the product in their vision and adapts it more closely to their needs.

Every one of our cameras is ready-to-go right out of the box. Intuitive plug and play, no fuss.



Certified Accessories

AtomOne works with all the brands we trust and tested.

Many other big-name AV and broadcast manufacturers have developed products compatible with Dream Chip cameras – testament to how well the product is viewed in the market, and implicit recognition of the unique contribution it can make to delivering creativity in the field of broadcast.

The logo for Anadicon, featuring the word "anadicon" in a lowercase, teal, sans-serif font.The logo for bel., consisting of the lowercase letters "bel." in white inside a solid black circle.The logo for Bluebell, with the word "Bluebell" in a dark blue, serif font, followed by a small asterisk-like symbol.The logo for BR REMOTE, featuring the letters "BR" in large white font above the word "REMOTE" in smaller white font, all contained within a black rectangular box.The logo for CyanView, with the word "CyanView" in white font inside a blue, rounded, pill-shaped background.The logo for computar, with the word "computar" in a blue, lowercase, sans-serif font.The logo for Kowa, featuring the word "Kowa" in a red, italicized, serif font, enclosed within a red oval border.The logo for LanSee, with the word "LanSee" in a bold, orange, sans-serif font, and the tagline "Electronic Design & Manufacturing" in a smaller, red, sans-serif font below it.The logo for SKAARHOJ, with the word "SKAARHOJ" in a blue, uppercase, sans-serif font.The logo for Vietex Media GmbH, featuring a stylized graphic of three slanted bars in blue, green, and red to the left of the text "Vietex Media GmbH" and "New media system integrator" in a grey, sans-serif font.The logo for wi co, with the letters "wi" stacked above "co" in white font inside a black square, with a small red dot above the "i".

Anadicon PL & B4 Mount to C-Mount

Across the AtomOne range, we provide a number of different cameras with either B4 or C mounts (or in some cases, the option for either). We choose the mount type based on the most typical application suited to the camera. But if you have a desperate need for the functionality of one of our C mount options and the option of a third-party zoom lens, then Anadicon have developed the perfect solution.

 Learn more at <http://www.anadicon.de/>



1 | Anadicon B4 Mount



3 | Anadicon B4 Mount



2 | Anadicon B4 Mount



4 | Anadicon PL Mount

Lenses

With B4 and C mount options, the AtomOne range was designed so that you can integrate it into your existing workflow and make use of your existing equipment – you don't build your world around an AtomOne, you build an AtomOne into your world. But if you want to get really specialist, look no further than the Computar and Kowa lens ranges: designed centrally with machine vision and factory automation in mind, they have huge additional potential in the realm of broadcast.

- | | |
|--|--|
| 1 Computar M0824-MPW2: Fixed 8mm Computar lens for AtomOne and AtomOne 4k mini 11 | 7 DCT 3.4mm S-Mount Lens: Dream Chip 3.4mm s-mount lens for AtomOne mini, AIR, Waterproof and 4k mini 7 (85°) |
| 2 Computar M1620-MPW2: Fixed 16mm Computar lens for AtomOne and AtomOne 4k mini 11 | 8 DCT 2,9mm S-Mount Lens: Dream Chip 2,9mm s-mount lens for AtomOne mini, AIR, Waterproof and 4k mini 7 (130°) |
| 3 Computar M2518-MPW2: Fixed 25mm Computar lens for AtomOne and AtomOne 4k mini 11 | 9 Kowa LM5JCM: Fixed 5mm Kowa lens for AtomOne and AtomOne 4k mini 11 |
| 4 Computar V0828-MPY: Fixed 8mm Computar lens for AtomOne 4k mini 16 | 10 Kowa LM5JC10M: Fixed 5mm Kowa lens for AtomOne and AtomOne 4k mini 11 (better resolution) |
| 5 Computar V1228-MPY: Fixed 12mm Computar lens for AtomOne 4k mini 16 | 11 Kowa LM4HC: Fixed 4,7mm Kowa lens for AtomOne 4k mini 16 |
| 6 Computar V1628-MPY: Fixed 16mm Computar lens for AtomOne 4k mini 16 | 12 Kowa LM6HC: Fixed 6mm Kowa lens for AtomOne 4k mini 16 |
| | 13 Kowa LM8HC: Fixed 8mm Kowa lens for AtomOne 4k mini 16 |



CyanView – RCP

A winning combination - seen in such applications as Germany's Basketball and Ice Hockey productions - the CyanView Remote Control Panel RCP allows the remote IP control of both AtomOne products and an unlimited number of other camera types – including ENG, D-cinema and specialty cameras - and gives full creative control to the vision engineer, allowing them to regulate iris, gain, black/white levels and colour matching.

 Learn more at <http://www.cyanview.com/>



Skaarhoj – RCPv2


Where flexible workflow options are a priority, the Remote Control Panel from Skaarhoj is a great fit – accommodating many of the innumerable settings embodied with the AtomOne series through a serial to Ethernet converter. An intuitive, physical tool to give full creative control to camera operators.

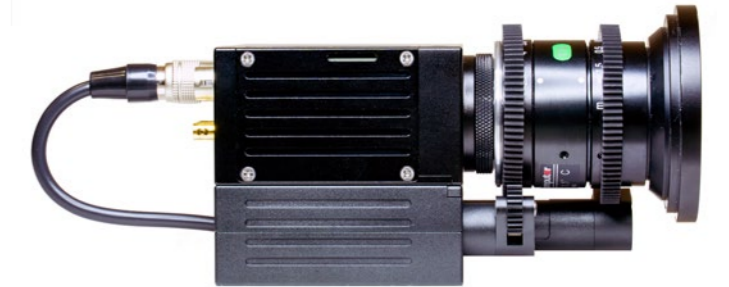
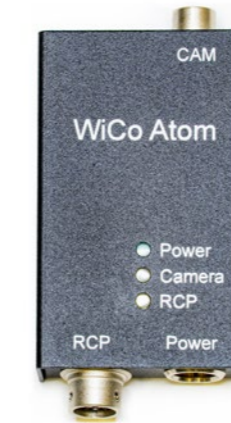
 Learn more at <https://www.skaarhoj.com/>



WiCo Atom Box

If your studio setup is already orientated around a Sony Remote Control setup, it would be silly to change that just to accommodate our incredible, super small cameras, right? With the WiCo Atom Box, there's no need. Connect your AtomOne camera(s) to a Sony RCP through the Wico Atom box and benefit from all the functionality that you'd have for any other Sony broadcast camera.

 Learn more at <http://www.wico.tv/>

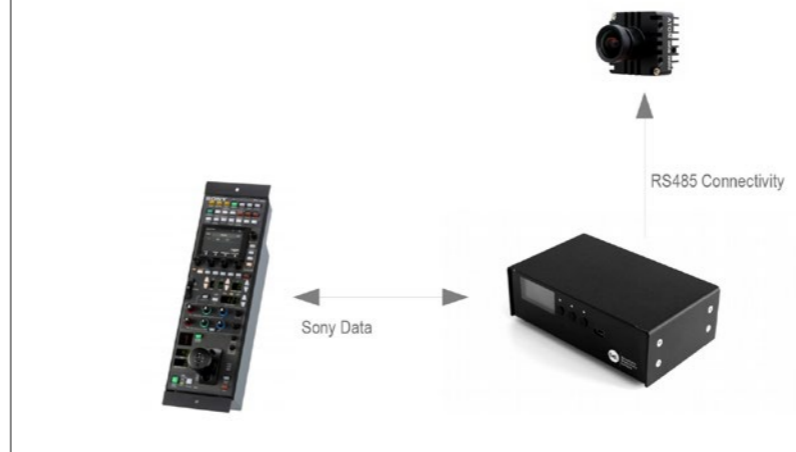


Broadcast Electronics Ltd.

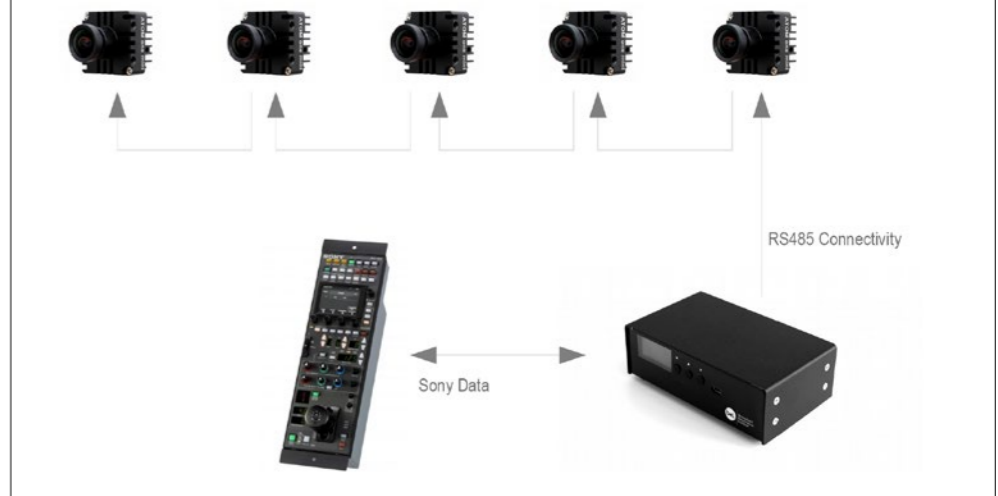
Another option for achieving Sony integration, the CCU 1 is a unique device interfacing Sony Remote Control Panels (RCP) with specialist cameras such as the Dream Chip AtomOne miniature camera range – allowing vision engineers to make detailed adjustments with a control panel they are already familiar with.

Learn more at <http://www.bcelec.co.uk/>

Single Camera System



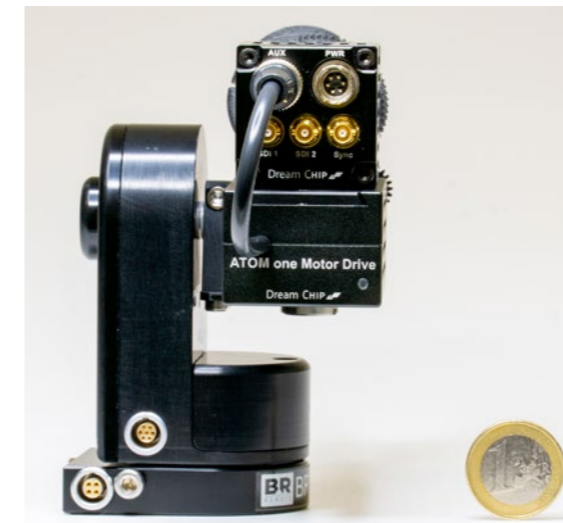
Multi Camera System (Up to 5 Camera Addresses)



Remote Head + Camera Panel Mk3

With both standard joystick and continuous wheel control options, the Mk3 can address up to four cameras, with up to 99 cameras on a system, using a small 'Protocol Converter' to communicate with each individual type. With all the levels of production control you would expect from a conventional controller, the Mk3 represents a cost-effective option for integrating AtomOne series cameras into your wider setup

 Learn more at <https://www.br-remote.com/>



LanSee

With their new range of products called Tidy, LanSee is bringing to the market an other level of integration for the Dream Chip cameras. They can now be controlled from any RCP but the combination with CyanView would be just perfect with its 2x ethernet port for the control and up to 2x 3G or 12G SDI for the video signal transport.


Need also to bring power to the field? Check their Hybrid fiber solutions!

 Learn more at <http://www.broadcast-in.com/lansee/>



Bluebell

Bluebell also provide a robust, rugged, compact and cost-effective SDI to Optic conversion option, in many cases converting multiple SDIs (as many as 72 3G SDI inputs) to a single fibre output.

 Learn more at <https://bluebell.tv/>



Vietex Media

HDSDI cables are not suitable in applications over roughly 80 metres, which can be an obstacle in broadcast environments such as stadiums. However, these problems can be overcome with conversion of the signal to fibre. The Vietex CCU-S provides for this conversion from nearly all autonomous-use AtomOne cameras, transporting SDI PAL, HD, 3G, 6G and 12G video back to the studio.

 Learn more at <https://vietexmedia.com/>



Trusted Partners

There are a significant number of accessories and integrations available for the AtomOne series, certified by Dream Chip, from vendor names you can trust. Not only do we take pleasure from working closely with other firms in the field to push the industry forward collectively, but we are proud that other vendors are also invested AtomOne series, recognizing the unique contribution it can make to delivering creativity in the field of broadcast.

anadicon

antelope
CAMERA SYSTEMS

bel.

B BLACKCAM®

Bluebell✱

BR
REMOTE

CARPETLIGHT®

Canon

computar

CyanView

EVS

FUJIFILM

Kowa

LanSee
Electronic Design & Manufacturing

POLECAM

RIEDEL

SIMPLY LIVE

SKAARHOJ

slomo.tv

SONY

TAMRON

Vietex Media GmbH
New media system integrator



The AtomOne Family

An AtomOne for every moment.

We didn't just make one amazing micro-sized camera, we made a whole family! Depending on the application you have in mind, our series of cameras incorporates any number of options. Waterproof? No problem. Super-slow motion (500fps)? Yep, we do it. A choice between global or rolling shutter options, between HD and 4k, between C, S and B4 mount options? Of course.

Wherever you want to put an AtomOne, we have an option to meet your needs.

AtomOne Family Overview

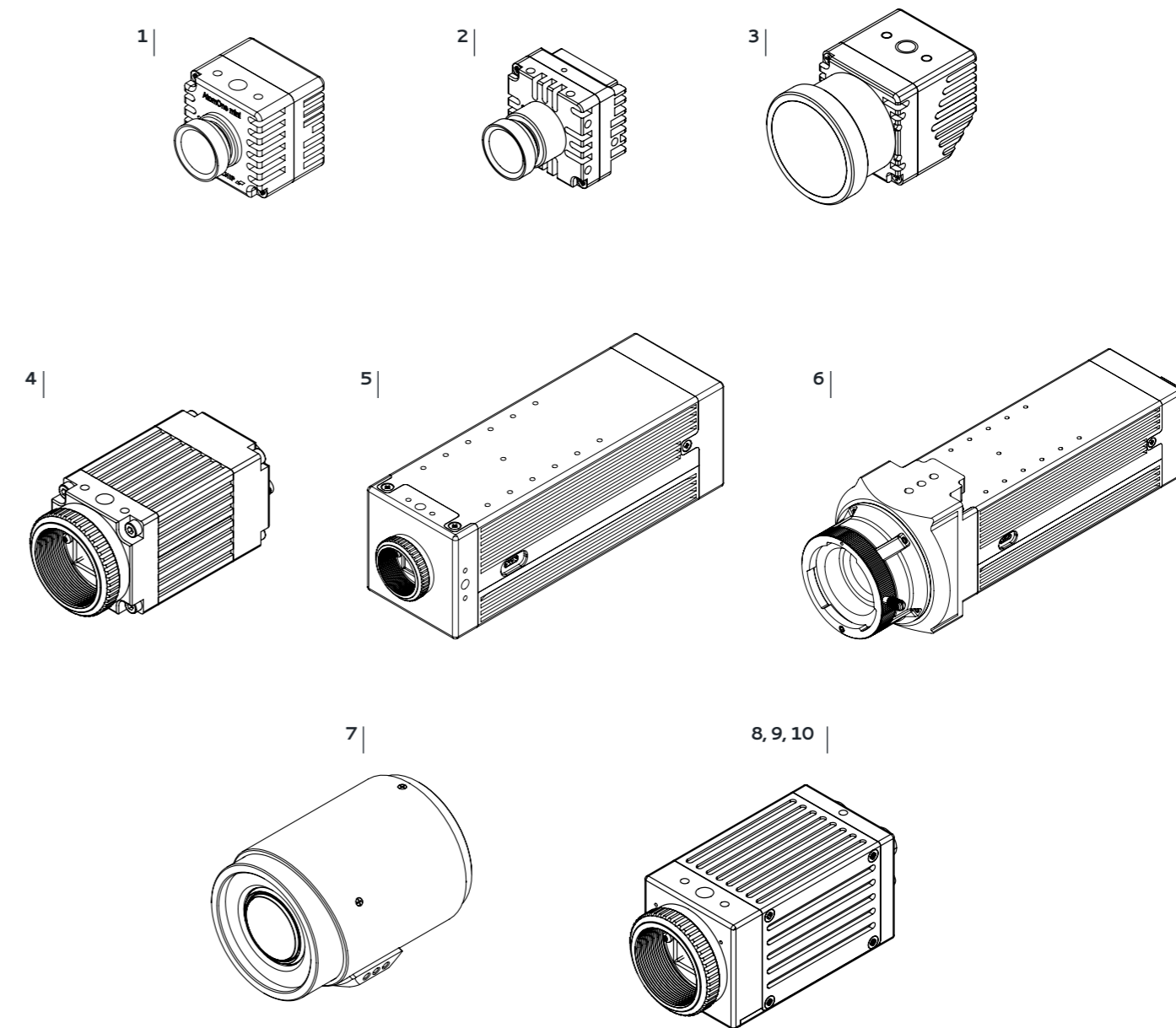
Unique models designed to fit your professional workflow.



- 1. AtomOne mini
- 2. AtomOne mini AIR
- 3. AtomOne mini Waterproof
- 4. AtomOne
- 5. AtomOne SSM500 C-Mount
- 6. AtomOne SSM500 B4
- 7. AtomOne mini Zoom



- 8. AtomOne 4K mini 7
- 9. AtomOne 4K mini 11
- 10. AtomOne 4K mini 16



DREAM CHIP TECHNOLOGIES GMBH

+49 5131-90805-0

info@atom-one.de

www.atom-one.de



Made in Germany

