



macOS based Ingest Solution For All Broadcast Needs



just: in mac is a macOS-based client-server ingest solution for all broadcast needs. Capture SDI, HDMI, NDI®5, multi-camera and VTR sources using either Crash, Batch and Scheduled recording modes.



Easy Integration

Integrates into the production workflow of any TV station or post-production facility.



One User Interface, Multiple Channels

The built-in video and audio previews and the versatile multi-channel aware inspector enable the ingest operator to control all available ingest machines from a single user interface.



Safety First

Smart fallback destinations for out-of-storage or network connection loss scenarios and safe-write logic in the event of a power outage.



Format And Container Support

Dynamically record video sources directly into industry-standard AVF, MXF OP-1a and MP4 containers with broadcast-grade codecs, including Avid DNxHD®/HR®.



Marker Support for Adobe Premiere Pro

Markers can be used for all kind of recordings where the operator needs to mark highlights, scenes or specific actions to speed up the post-production workflow.



Presets

Customizable capture and destination presets to quickly switch between commonly used setups.



Extensive Metadata Support

The XML metadata engine enables you to customise XML exports to accompany QuickTime and MXF generated files – or to write the desired metadata set directly into the QuickTime file.



Speed Up Your Process

Use multiple concurrent instances to significantly speed up editing in your NLE or to generate a proxy alongside the high-res file.



Multichannel Recording

Sophisticated single and multi-channel ingest in one flexible, expandable client-server ingest solution. 24/7 deployment in time-sensitive broadcast environments.



Full NDI®5 Support

Full discovery and recording support for NDI®5 sources based on the open, low-latency video-over-IP protocol developed by NewTek™.



QuickTime

NTSC PAL HD UHD

- XDCAM EX, XDCAM HD, XDCAM HD422
- ProRes 422, LT, Proxy, HQ
- ProRes 4444 (with alpha)
- H.264
- HEVC



MXF

NTSC PAL HD UHD

- DVCPRO HD
- IMX 30/40/50
- ProRes 422, LT, Proxy, HQ
- ProRes 4444 (with alpha)
- XDCAM EX, XDCAM HD, XDCAM HD422
- AVC-Intra 50M/100M
- Avid DNxHD®/Avid DNxHR®



MP4

NTSC PAL HD UHD

- H.264



System Requirements

- Apple Mac Pro, iMac, (Intel), iMac Pro or Mac mini (Intel)
- Apple macOS Catalina (10.15.x) and macOS Big Sur (11.x)
- Support for AJA and Blackmagic Design video devices
- For detailed system requirements please consult the online user manual or contact us



Supported Frame Rates

- 23.976, 24, 25, 29.97, 30, 50, 59.94, 60
- Supported frame rates are container and codec specific



just:in linux

Linux-based enterprise-grade client-server Ingest Solution



just:in linux is an enterprise-grade, client-server based Ingest solution for multichannel recording from SDI, HDMI, NDI®5, and SRT input sources. It unites the power of a macOS client frontend with the scalability of a Linux-based backend.



Reliability

just:in linux enables 24/7 deployment in time-sensitive broadcast environments and comes with an internal RAID for reliable and sustainable recording.



Automatic Signal Conversion

Automatic input signal conversion (SDI, HDMI, NDI®5 and SRT) to the defined frame rate and resolution settings of the selected Capture Preset(s).



Safety First

Use multiple destinations for out-of-storage or network connection loss scenarios and safe-write logic in the event of a power outage.



Pre- And Post-Record Scripts

Customizable pre- and/or post-record scripts to automatically execute actions like generating placeholders in MAM systems or uploading files to FTP servers.



Metadata And Adobe Markers Support

Metadata engine to customize and write sidecar files containing the selected metadata to be easily imported into MAM systems. Full Adobe Premiere Pro markers support.



Multichannel Recording

Sophisticated and workflow-oriented multichannel ingest in one flexible, expandable and enterprise-grade client-server ingest solution. Support for SDI, HDMI, NDI® and SRT sources to be recorded independently or concurrently.



One User Interface, Multiple Channels

The built-in video and audio previews as well as the flexible channel inspector enable full control of all available ingest machines from a single user interface. Different multi-viewer layout templates can be defined and selected based on specific user login.



Speed Up Your Process

Use multiple concurrent instances to significantly speed up editing in your NLE or to generate a proxy alongside the high-res file.



QuickTime

NTSC PAL HD UHD UHD2

- ProRes 422, LT, Proxy and HQ
- H.264
- Photo JPEG
- Uncompressed 4:2:2



MXF

NTSC PAL HD UHD

- IMX 30/40/50
- Uncompressed 4:2:2
- XDCAM EX, XDCAM HD, XDCAM HD422
- AVC-Intra 50M/100M
- Avid DNxHD®/Avid DNxHR®



System Requirements (macOS Client)

- Apple Mac Pro, iMac (intel), iMac Pro or Mac mini (Intel)
- Apple macOS Catalina (10.15.x) or macOS Big Sur (11.x)
- 10 GbE network interface recommended for optimal connection to the internal RAID of the just:in linux server appliance
- For detailed system requirements please consult the online user manual or contact us



MP4 / MPEG-TS

NTSC PAL HD UHD

- H.264



AVI

NTSC PAL HD

- Uncompressed 4:2:2

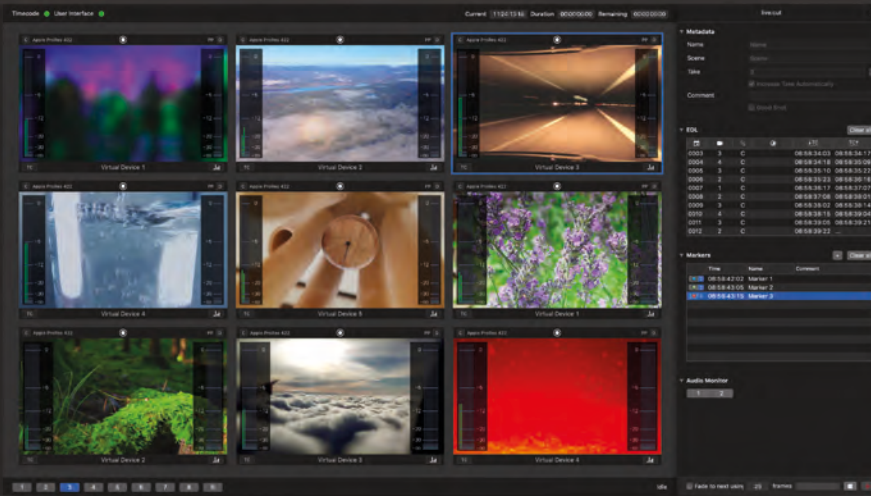


Supported Frame Rates

- 23.976, 24, 25, 29.97, 30, 50, 59.94, 60
- Supported frame rates are container and codec specific



Multicam-Workflow For Up To 16 Cameras



live:cut enables multicam-workflow for up to 16 cameras. This reduces production time by eliminating time-consuming production processes.



Centralized Environment

Ingest, metadata entry, live logging, media management and workflow automation are centralized in a single, easy-to-use interface, namely just:control.



Suited For Your Scenario

live:cut is suited for talk and game shows, soaps, sitcoms, live concerts, event recordings and many other scenarios.



Low Cost, High Performance

Available for flexible hardware setups (e.g. a Mac mini) live:cut is the ideal low-cost, low-space and energy efficient solution for OB-vans and other on-location multi-camera setups.



Time Efficient

Re-edits and post-production tasks can be performed while recording, speeding up your production process. Labels, markers and comments can easily be set during the recording.



Ease Of Use

Hassle-free operation: start and stop the multi-camera recording with a single button.



Two Solutions – One Interface

live:cut is integrated into just:in mac and just:in linux to accommodate up to 16 channels of multi-camera ingest.



Customize Your Flow

Recorded takes are tracked, organized and sent to NLE workstations or your MAM of choice for further processing.



Reduce Production Time

As a built-in option to just:in, live:cut reduces the production time of your multi-camera productions.



Fast EDL Turnaround

live:cut's realtime vision mixer's EDL can instantly be processed into a multi-camera timeline in the NLE of your choice.



Easy Integration

live:cut is an integrated option of just:in and supports both GPI-based EDL transmission (vision mixers) and native Blackmagic ATEM devices.

Take	From	To	Duration	Start Time	End Time
0003	6 → 1	D	00:00:01:00	13:35:14:13	13:35:15:12
0004	1	C		13:35:15:13	13:35:18:15
0005	8	C		13:35:18:16	13:35:23:19
0006	8 → 1	D	00:00:01:00	13:35:23:20	13:35:24:19
0007	1	C		13:35:24:20	13:35:28:08
0008	6	C		13:35:28:09	13:35:33:07
0009	5	C		13:35:33:08	13:35:36:16
0010	7	C		13:35:36:17	13:35:39:14
0011	7 → 3	D	00:00:01:00	13:35:39:15	13:35:40:14
0012	3	C		13:35:40:15	...

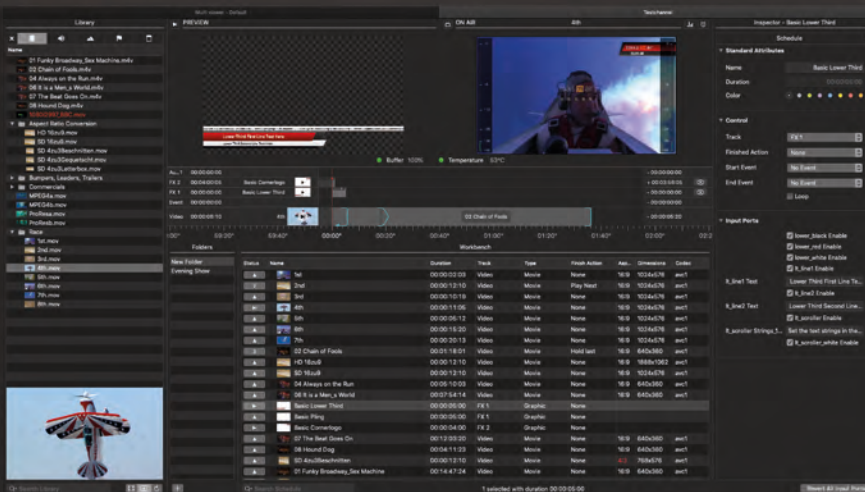


System Requirements

- Apple Mac Pro, iMac (Intel), iMac Pro or Mac mini (Intel)
- Apple macOS Catalina (10.15.x) or macOS Big Sur (11.x)
- For detailed system requirements please consult the online user manual or contact us



Live Production Payout For Video And Realtime Graphics



just:live is a live production payout for video and realtime graphics. It streamlines the payout of videos and realtime graphics in any live environment while maintaining full control over the production.



Live Payout

Manage and control the payout of videos, multiple layers of realtime graphics and router control/GPI events manually, in a single interface with multiuser support.



Build, Monitor And Control

just:live's integrated timeline allows operators to build rundown sequences and monitor the progress of currently playing clips.



Have A Break

Set in- and out-points and split clips on-the-fly to insert commercials. Use placeholders to add videos at a later time.



Smart User Interface

The smart graphical user interface provides an unlimited, frame accurate review and preview of all scheduled video items.



UHD – Yes We Can

SD/HD and UHD – SDI and/or IP-stream payout of video and multiple layers of realtime graphics – using off-the-shelf hardware.



Industry Proven

Major broadcast file format and codec support, back-to-back payout of mixed container formats, codecs, aspect ratios, pixel sizes and field orders.



Growing File Support

Instant payout of growing files at your fingertips. Great way to accelerate your workflow during a live show.



Goodbye Tape

Designed for tapeless workflows, just:live fully integrates into standard MAM, newsroom systems and storage solutions.



Standards Matter

ToolsOnAir's payout products rely on standard hardware from Apple, AJA and Blackmagic Design.



Finished Actions

Advanced finished actions for each clip like play next, cue, reload, hold and cue or loop.



Supported Codecs

- DVCPRO, DVCPRO50, DVCPROHD, HDV
- All Apple ProRes Codecs
- XDCAM HD/ES/EX/HD422
- MPEG-2, MPEG-4, H.264
- MPEG IMX
- AVC-Intra
- Avid DNxHD®/Avid DNxHR® (decoder)
- JPEG
- Apple Animation Codec



Supported Containers

- MOV, MP4, M4V
- MPG, MPEG
- MXF



System Requirements

- Apple Mac Pro or Mac mini (Intel) - Engine/Control
- Version 3.1: Apple macOS Catalina (10.15.x), macOS Big Sur (11.x)
- Support for AJA and Blackmagic Design video devices
- For detailed system requirements please consult the online user manual or contact us

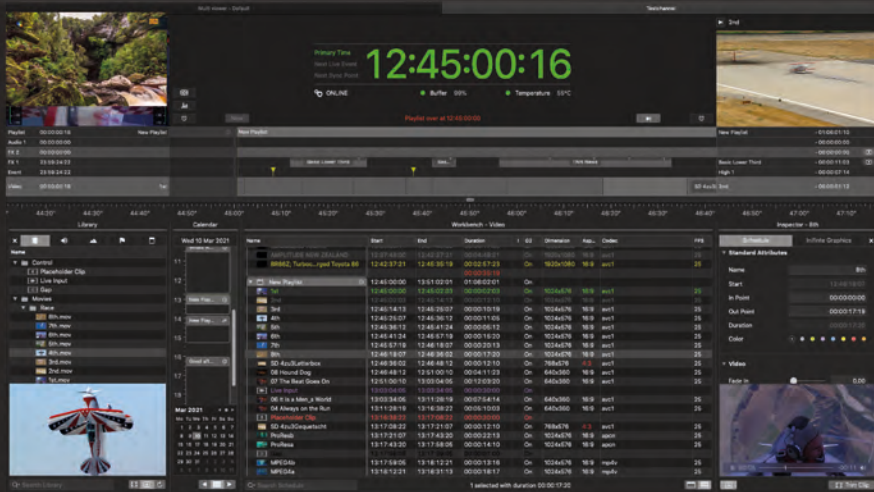


Supported Frame Rates

- 23.976, 25, 29.97, 30, 50, 59.94, 60
- Supported frame rates are container and codec specific. Codec support depending on installed Apple Pro Codecs



Automated Broadcast Payout Server



just:play is an automated 24/7 broadcast payout solution with SD, HD and UHD format support, seamlessly integrating live feeds and routers as well as GPI events and realtime graphics.



24/7 Payout

Manage your 24/7 payout in realtime with an unlimited number of operators working on the same channel.



Always In Control

just:play enables the operators to have full control of the rundown during the scheduling process.



Smart User Interface

The smart graphical user interface provides an unlimited, frame accurate review and preview of all scheduled video items.



Schedule Your Way

Schedule content weeks in advance with the user-friendly timeline, the traditional list view (with metadata support) and a convenient calendar function.



Switch To Live

High-quality video, audio and realtime graphics payout with the ability to switch to live using a single video device.



Industry Proven

Major broadcast container and codec support. Import of industry-standard playlists using CSV and XML.



UHD – Yes We Can

SD/HD and UHDp60 – SDI payout of video and multiple layers of realtime graphics using qualified hardware from Apple, AJA and Blackmagic Design.



Mind The Gap

Gaps, overlays and placeholders are easily visible and can be edited right away. just:play's playlist-based design makes it easy to structure the rundown.



Realtime Graphics

Interactive realtime graphics with multiple layers. Support for external data displayed by news tickers, stock exchange, weather forecast and more.



Easy Integration

just:play can be easily integrated and connected with other ToolsOnAir products as well as third-party hardware and software.



Supported Codecs

- DVCPRO, DVCPRO50, DVCPROHD, HDV
- All Apple ProRes Codecs
- XDCAM HD/ES/EX/HD422
- MPEG-2 , MPEG-4, H.264
- MPEG IMX
- AVC-Intra
- Avid DNxHD@/Avid DNxHR@ (decoder)
- JPEG
- Apple Animation Codec



Supported Containers

- MOV, MP4, M4V
- MPG, MPEG
- MXF



System Requirements

- Apple Mac Pro or Mac mini (Intel) - Engine/Control
- Version 3.1: Apple macOS Catalina (10.15.x), macOS Big Sur (11.x)
- Support for AJA and Blackmagic Design video devices
- For detailed system requirements please consult the online user manual or contact us



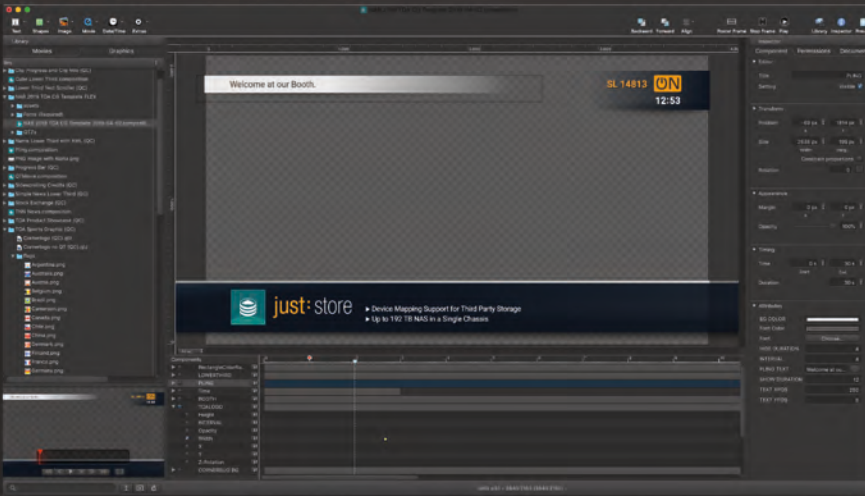
Supported Frame Rates

- 23.976, 25, 29.97, 30, 50, 59.94, 60
- Supported frame rates are container and codec specific. Codec support depending on installed Apple Pro Codecs.



composition:builder

Realtime Graphics Template Editor
for just:live and just:play



composition:builder enables small and mid-sized TV stations to easily create professional looking realtime graphic templates for just:live and just:play.



Powerful Graphics Development

composition:builder enables you to create professionally looking realtime graphic templates for news, weather, stock exchange, sports and other broadcast applications. These realtime graphics can directly be used in just:play and just:live.



Web-Based Graphics Control

Changes to graphics and information sources can be easily made during playout and brought to air in real-time – even with remote, web-based customized control interfaces which can be used with any web-browser (on desktop and mobile devices).



We Love XML. And XPath.

Out-of-the-box support for XML files, coupled with the powerful XPath query language enables data extraction from local or networked files.



Customize On Air

Customize your realtime graphics On Air or use external sources (XML, RSS, images and text files) to update your graphics manually or automatically.



Stop Frames For Dynamic Graphics

The powerful "stop frame" functionality allows you to dynamically extend the duration of graphic templates, while maintaining the individual duration of animations within the template.



Sample Content Included

Ships with a package of pre-designed templates which can be used and modified for free. Drop them into any graphics layer in just:play or just:live to play them out concurrently with any video clip.



Extensibility

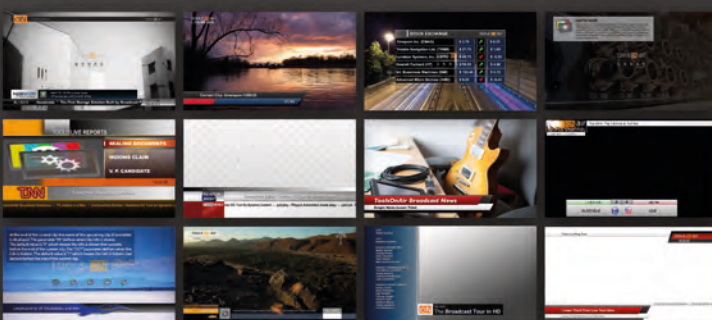
composition:builder is designed to interface with Apple's Quartz Composer technology, enabling you to create your own custom components in Quartz Composer to extend your graphic templates.



Native Integration

composition:builder graphics are interpreted natively and rendered on-the-fly by ToolsOnAir's playout engine, allowing for a realtime preview of graphic templates in the just:play and just:live user interface.

Included Templates



System Requirements

- Apple macOS Sierra (10.12.6) up to macOS Mojave (10.14.x)
- At least 8 GB of RAM
- ATI, NVIDIA or Intel graphics card (integrated or discrete)
- A screen resolution of at least 1920x1080
- For detailed system requirements please consult the online user manual or contact us



Supported Resolutions

- NTSC, PAL, HD, UHD



Realtime Closed Captions Generator And Inserter



just:CC is an AI based realtime Closed Captioning generator and inserter. It generates 608/708 CC data and inserts them into the VANC data stream of SD, HD, UHD and 4K signals.



Industry leading Accuracy

just:CC uses a state-of-the-art, industry leading speech-to-text engine. Depending on the content, it is able to produce an accuracy of around 90%. In many cases, it performs more accurate than a human captioner.



Supports All Common CC Formats

just:CC generates 608/708 Captions and "608 embedded in 708" CC data and is also able to detect and pass through already existing CC data. Once the data is generated it is inserted into the output signal using off-the-shelf hardware.



Encoding Quality & Realtime Insertion

just:CC delivers a high-quality CC insertion you expect in a professional broadcast environment by using industry leading speech-to-text recognition technology. The tight integration with hardware from AJA, Apple and Blackmagic Design allows to generate and insert the data using a single workstation.



24/7 Closed Captioning Generator

just:CC empowers broadcasters to generate and insert Closed Captions onto their channel, even if the live signal or pre-made content does not come with CC data. Being entirely on-premise this is done independently of any internet connection.



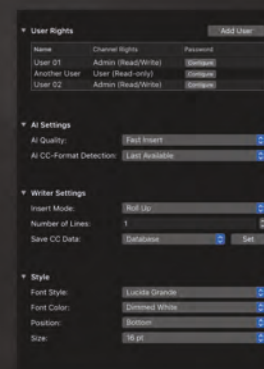
Easy Customisation

just:CC is engineered to enable easy customisations such as defining the target language, the accuracy/speed of the encoder, the ability to force upper case captions on screen as well as recognising text by adding sentences to both a white- and blacklist.



One User Interface

just:CC's intuitive graphical user interface allows the operator to adjust operationally critical settings, like how the CC data is generated and how captions appear on screen.



System Requirements

- Apple Mac Pro, iMac, iMac Pro or Mac mini
- Apple macOS Catalina (10.15.x) or later
- At least 4 CPU cores
- For detailed system requirements please consult the online user manual or contact us
- Supported frame rates are vendor and card specific